



# Charts on Demand: A New Revenue Stream for Hydrographic Agencies

Kevin Ingram, Senior Technical Manager, Maritime

Rafael Ponce, Global Maritime Business Development Manager

# Challenges for Hydrographic Organizations



# Charts on Demand

ArcGIS Desktop:  
Data Ingest & Preparation



Chart Automation Tool

Optional  
Finishing



Cartographic editing

ArcGIS Server:  
Cartographic  
Data Storage



Carto-NIS

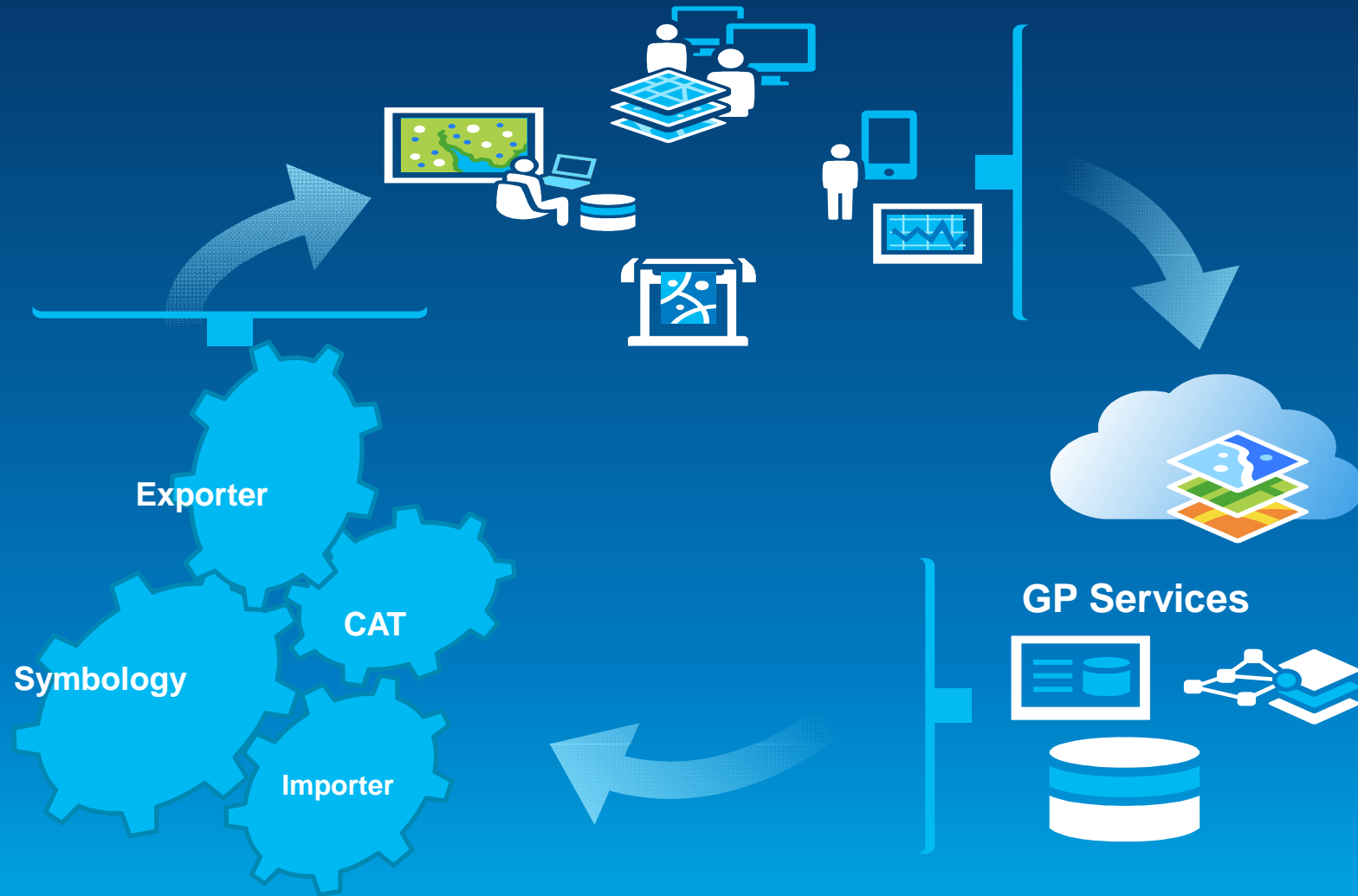
Web GIS:  
Product Request &  
Delivery



Custom charts

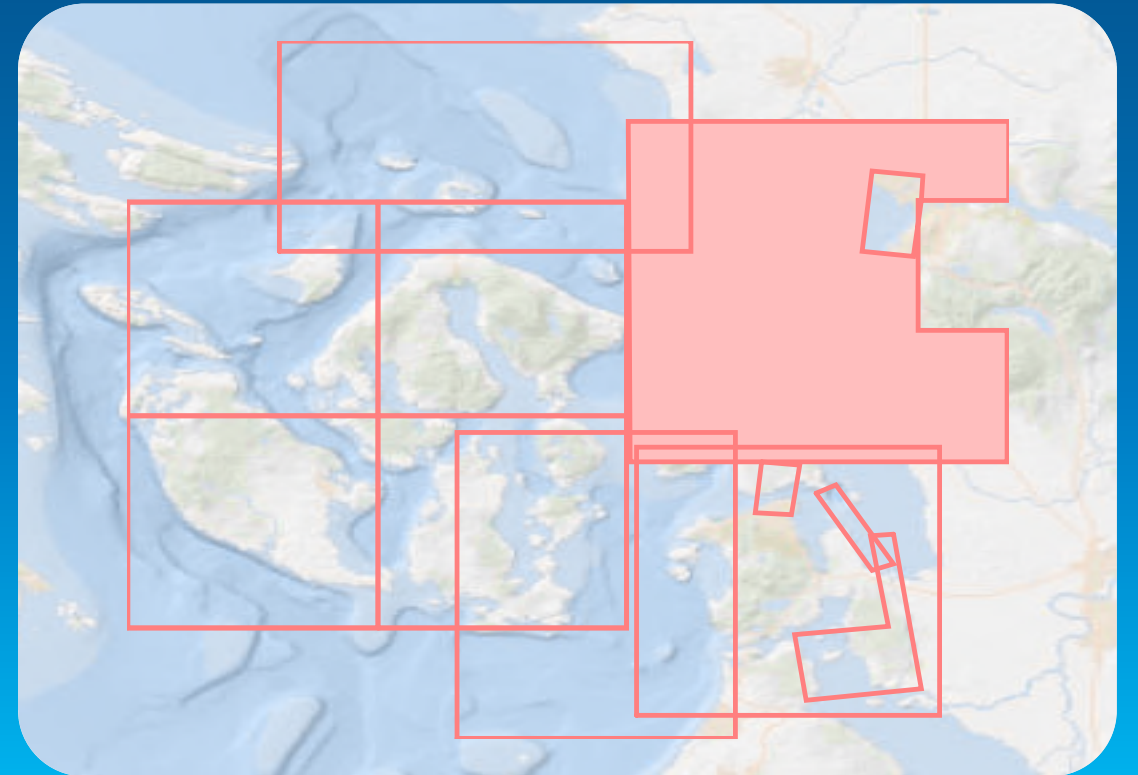
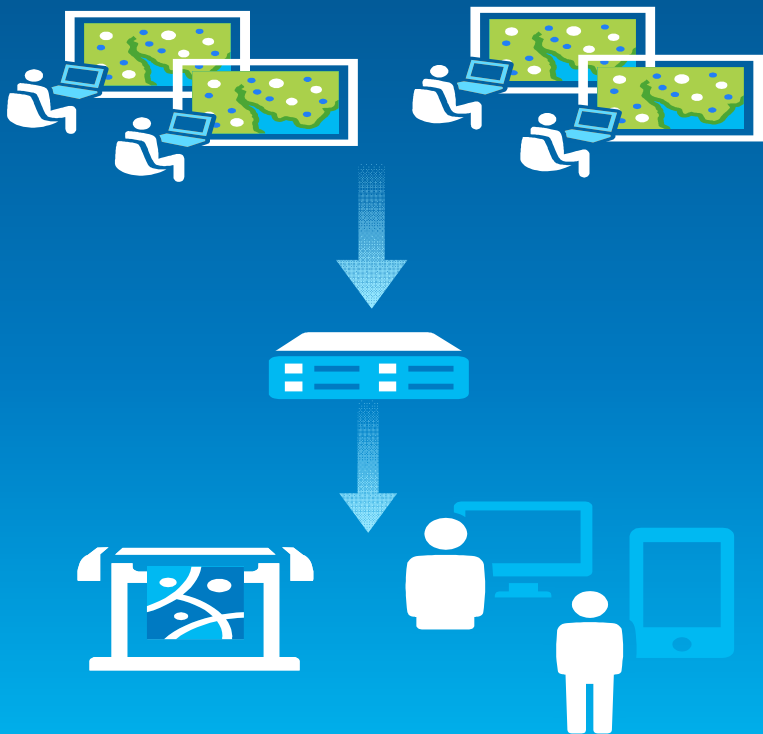
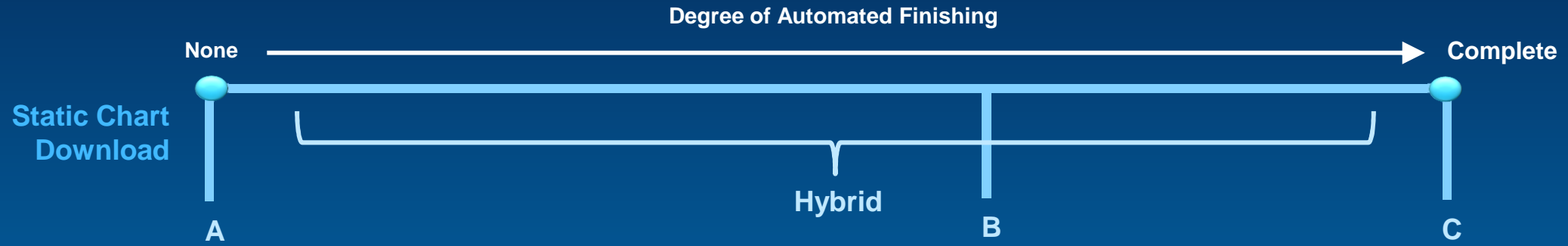
# Product on Demand (PoD)

Charting in the Cloud: Defined



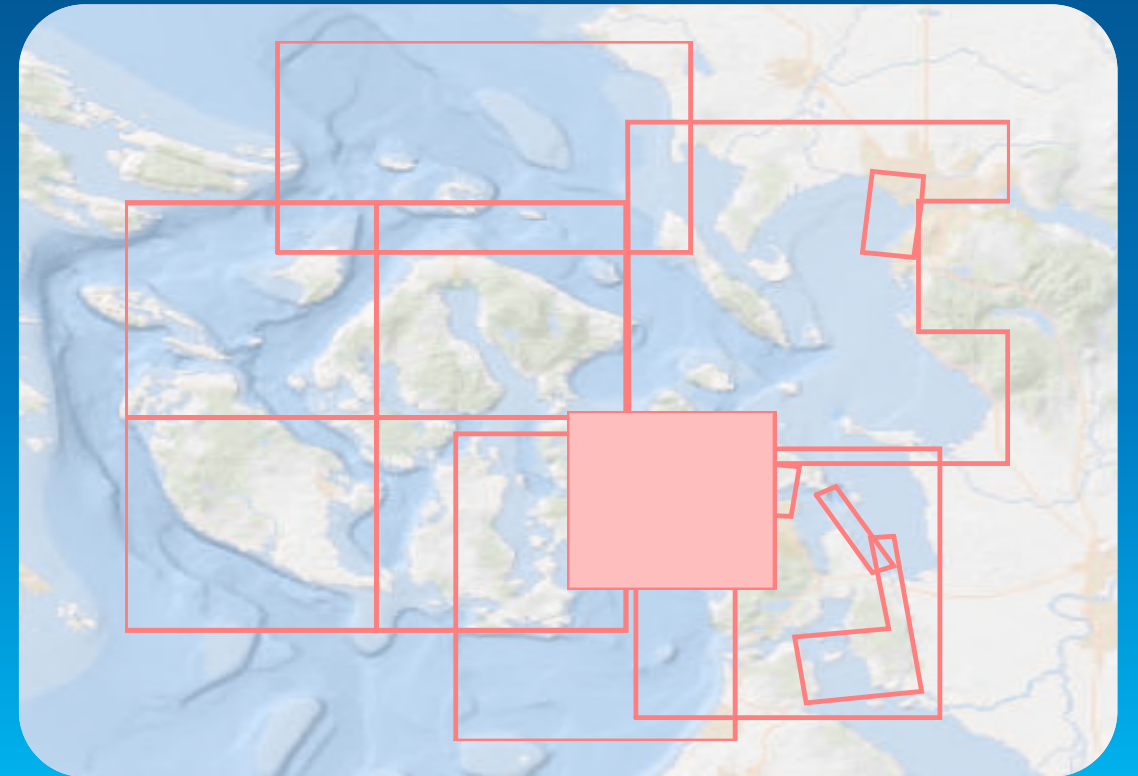
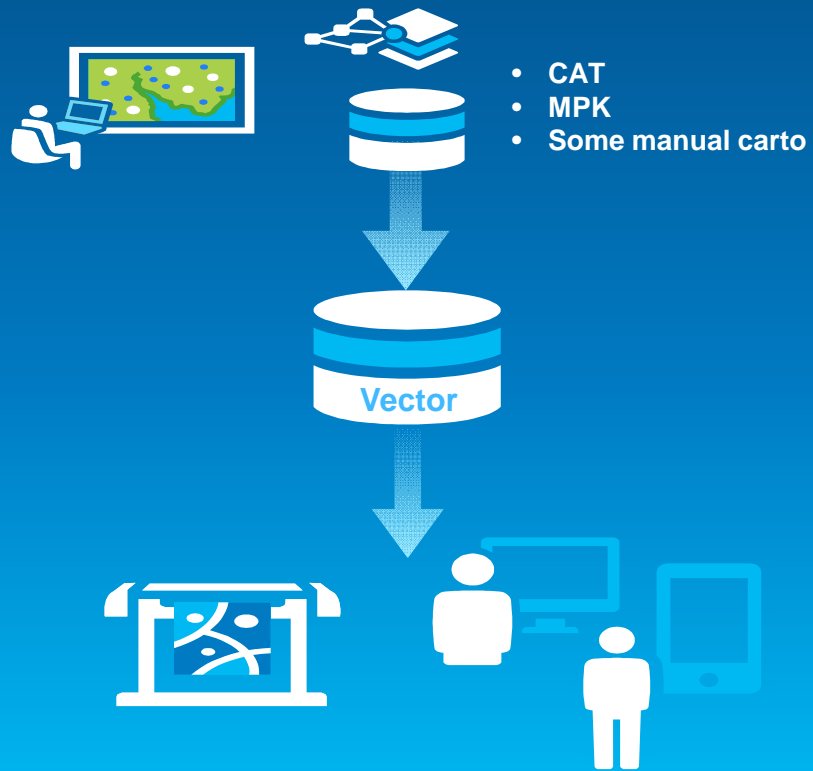
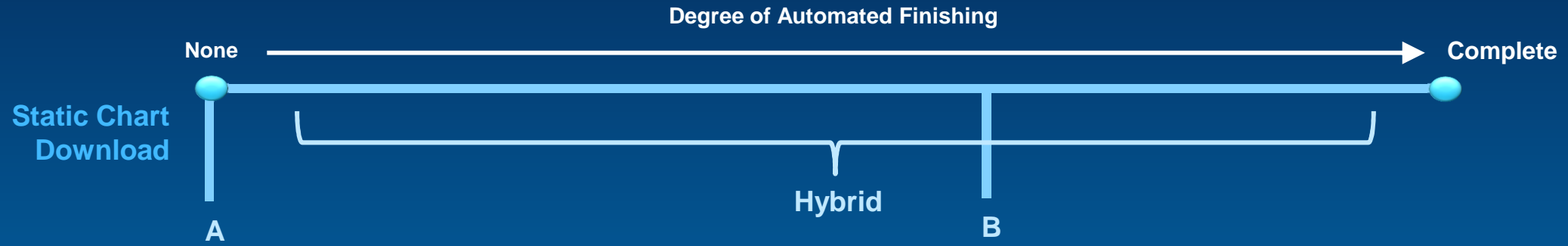
# Product on Demand (PoD)

## Static Download



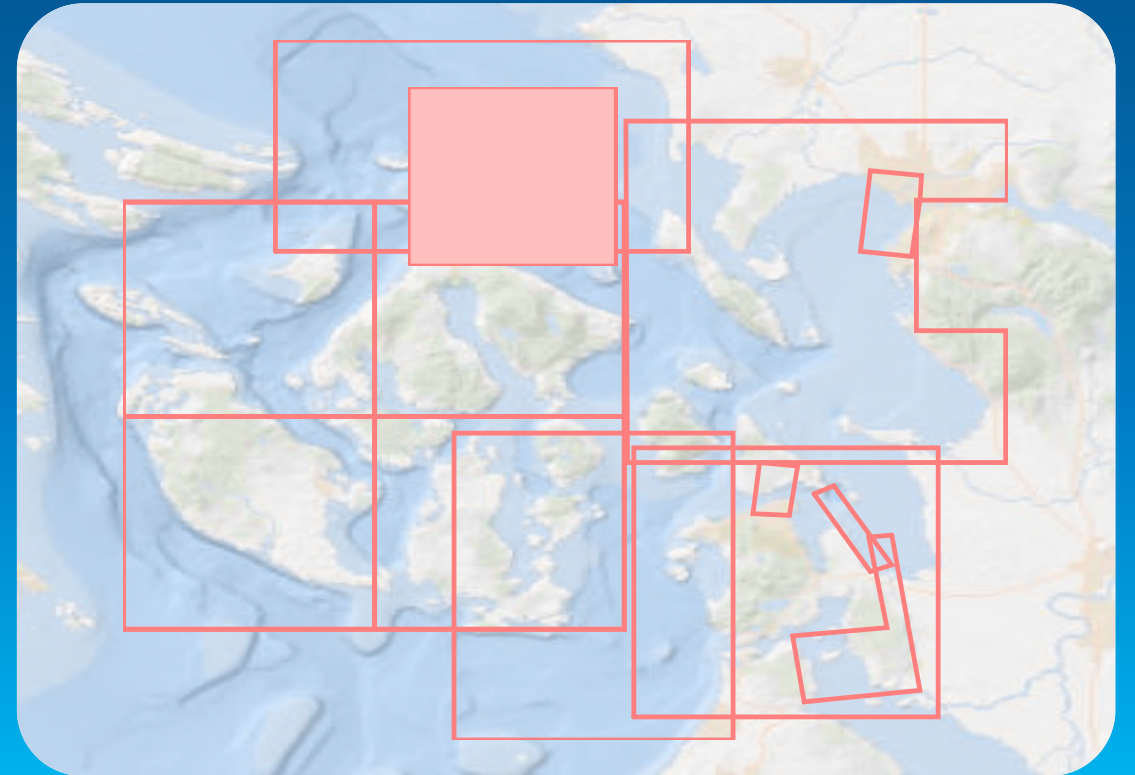
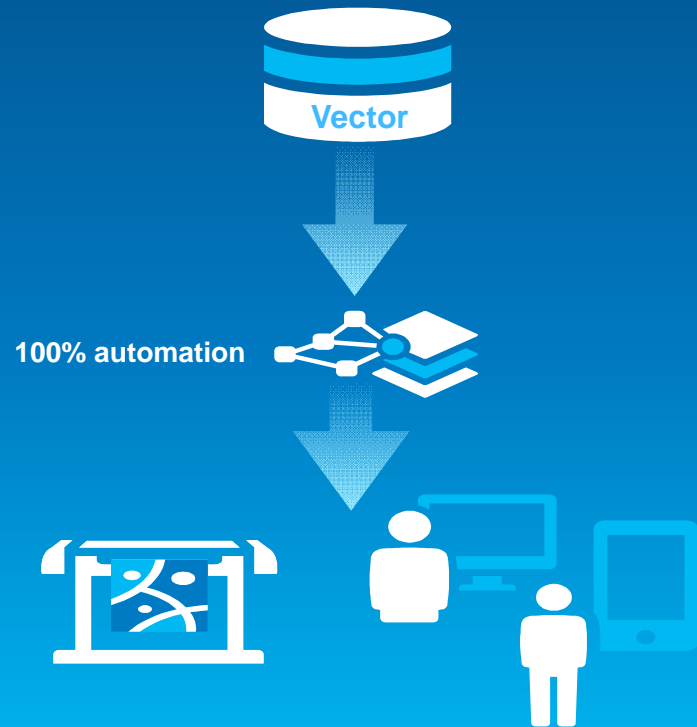
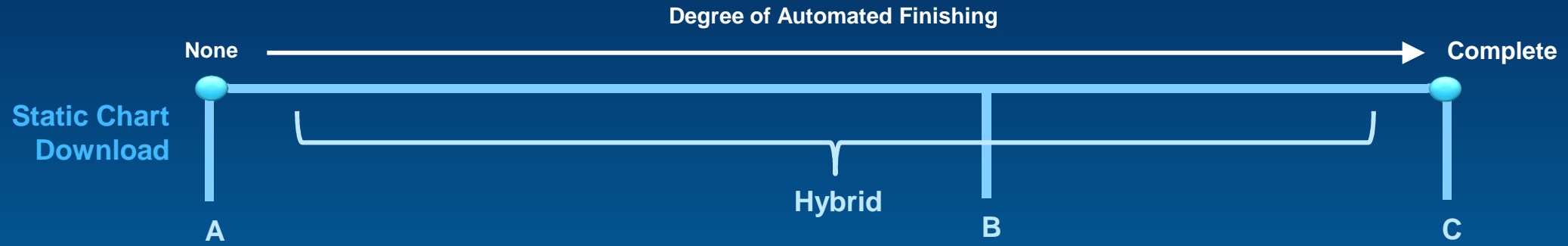
# Product on Demand (PoD)

## Hybrid

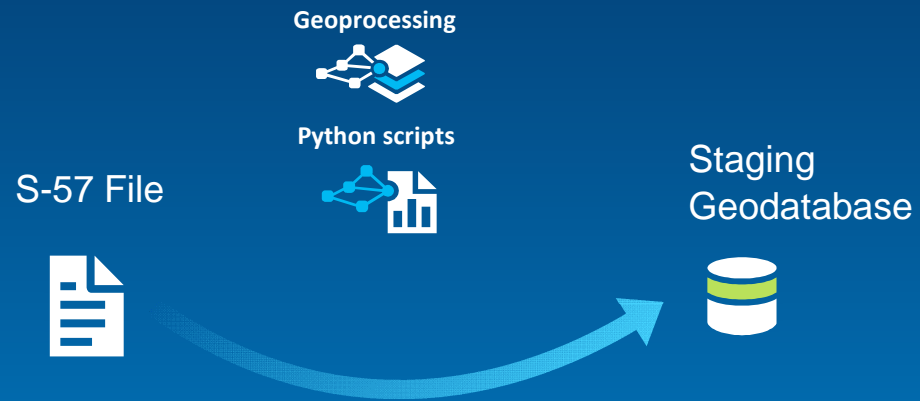


# Product on Demand (PoD)

## Complete Automation



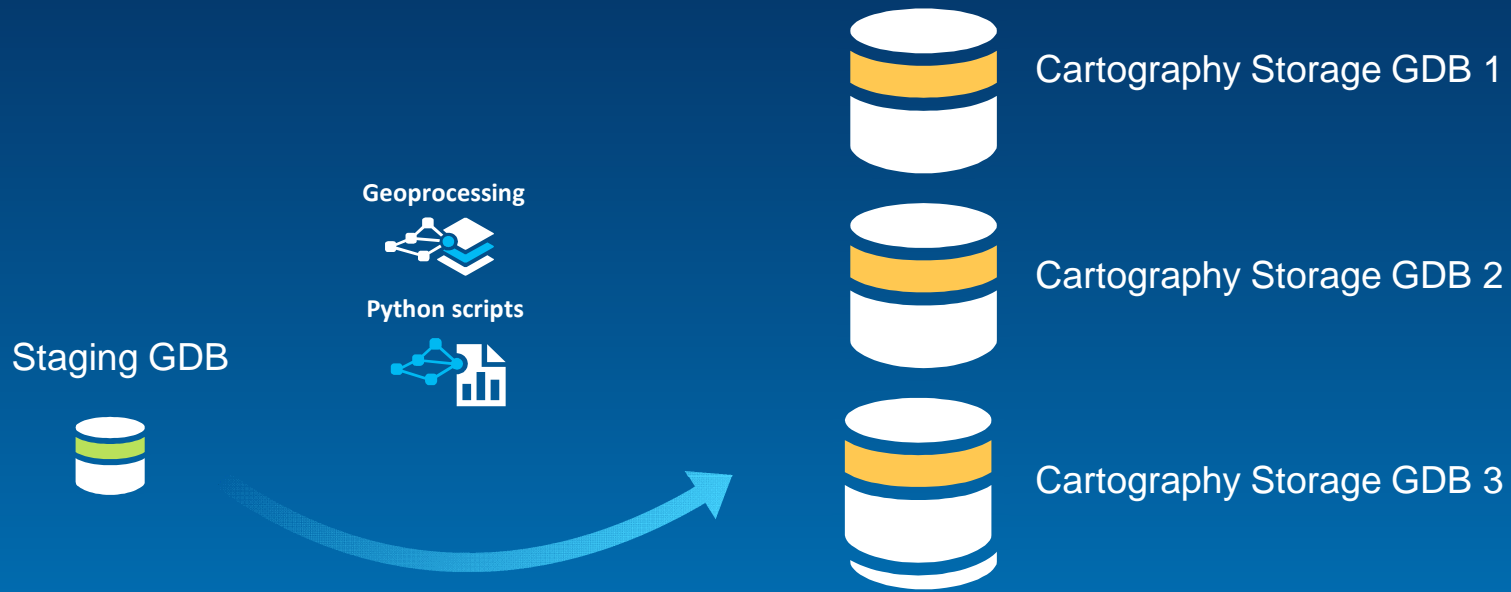
# Automated Chart Data Preparation



...hundreds of manual steps replaced by automation...

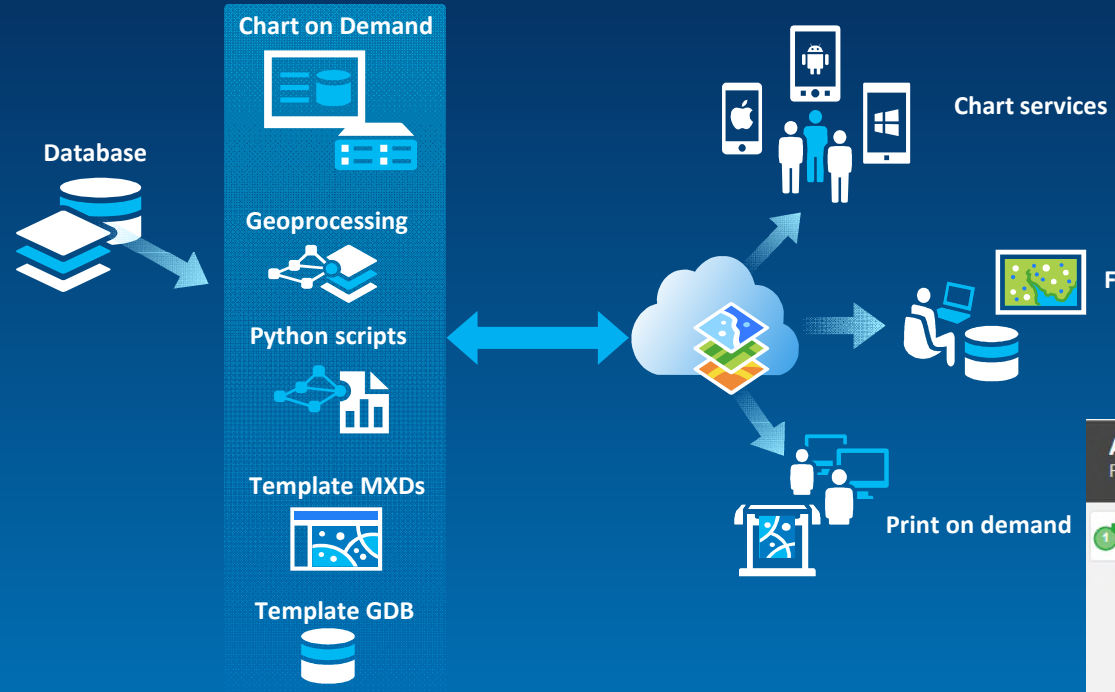


# Automated Cartographic Storage Update



...hundreds of manual steps replaced by automation...

# Web-based chart production



Product	Fixed 100K
Export Format	PDF
Scale	100000
Page Size	63 88 CENTIMETERS
Orientation	Portrait
Map Sheet Name	Fixed 100K_0
Custom Name	<input type="text"/>

1 product of 1 selected

**Export Products**

0:00:30 Export 20.6%  
Fixed 100K, Fixed 100K\_0, PDF

63 centimeters  
Scale: 100000  
90172 m  
26.7  
69839 m  
88 centimeters

# Product on Demand (PoD)

ArcGIS for Maritime: Server  
Product on Demand (POD): vector page map

### Export Queue

San Juan Islands SW

Export Products

10211 WGS 84 SAMPLE CHART: NOT FOR NAVIGATION San Juan Islands NW UNITS IN METERS

UNITS IN METERS

SAMPLE CHART: NOT FOR NAVIGATION

UNITS IN METERS

WGS 84 10211

Projection Information  
Units: Meter  
Coordinate System: GCS\_NAD\_83  
Scale: 1:25,000 Series  
For Symbols and Abbreviations see INT 1

Scale of Confidence Diagram

Symbol	Description
[Symbol]	Island
[Symbol]	Rock
[Symbol]	Shoal
[Symbol]	Bank
[Symbol]	Gravel
[Symbol]	Sand
[Symbol]	Mud
[Symbol]	Silt
[Symbol]	Clay
[Symbol]	Soft Mud
[Symbol]	Soft Sand
[Symbol]	Soft Gravel
[Symbol]	Soft Silt
[Symbol]	Soft Clay
[Symbol]	Hard Mud
[Symbol]	Hard Sand
[Symbol]	Hard Gravel
[Symbol]	Hard Silt
[Symbol]	Hard Clay
[Symbol]	Very Hard Mud
[Symbol]	Very Hard Sand
[Symbol]	Very Hard Gravel
[Symbol]	Very Hard Silt
[Symbol]	Very Hard Clay
[Symbol]	Extremely Hard Mud
[Symbol]	Extremely Hard Sand
[Symbol]	Extremely Hard Gravel
[Symbol]	Extremely Hard Silt
[Symbol]	Extremely Hard Clay

User Guide esri

Abbotsford

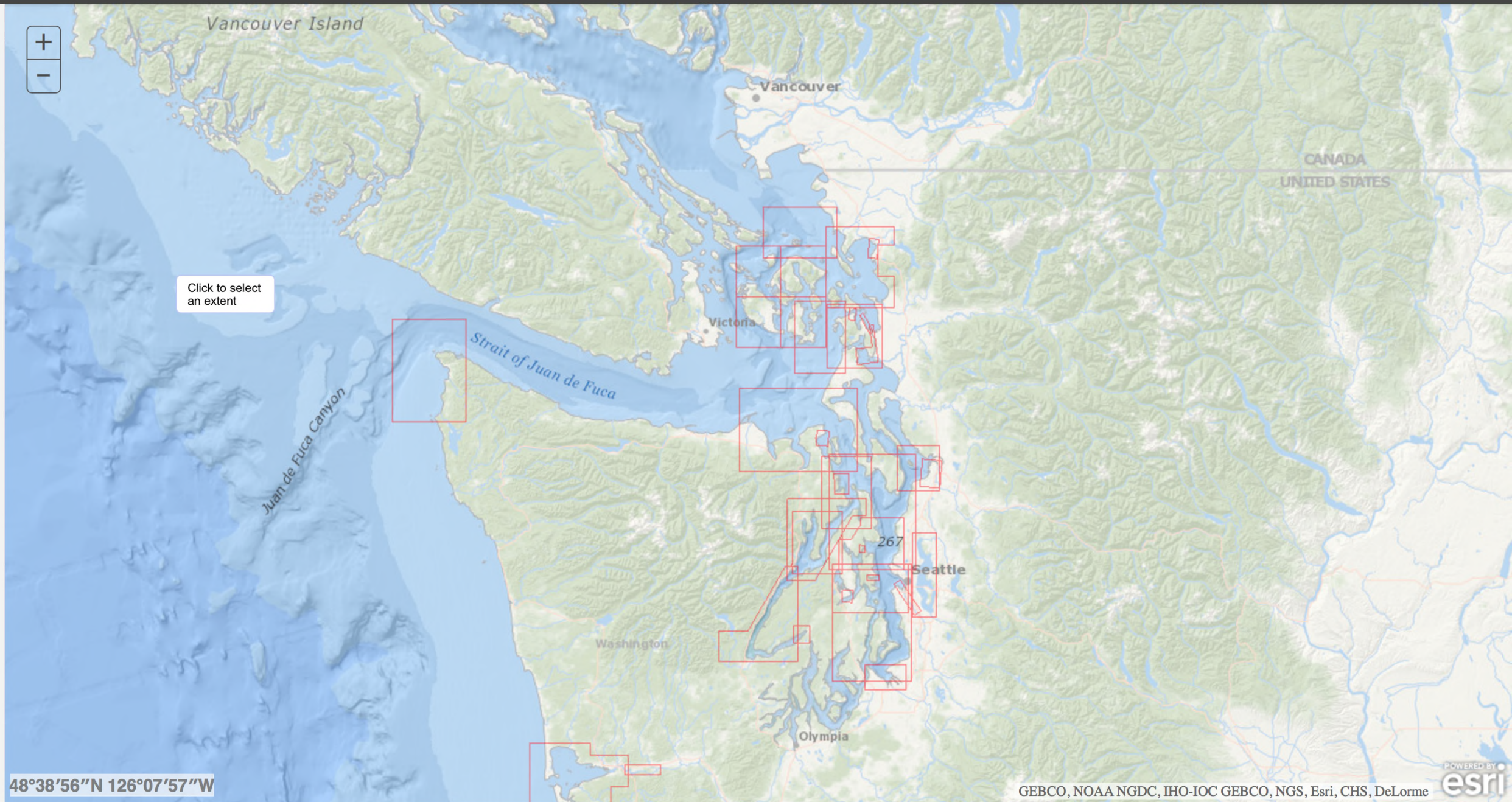
GEBCO, NGS, Esri, CHS, DeLorme esri



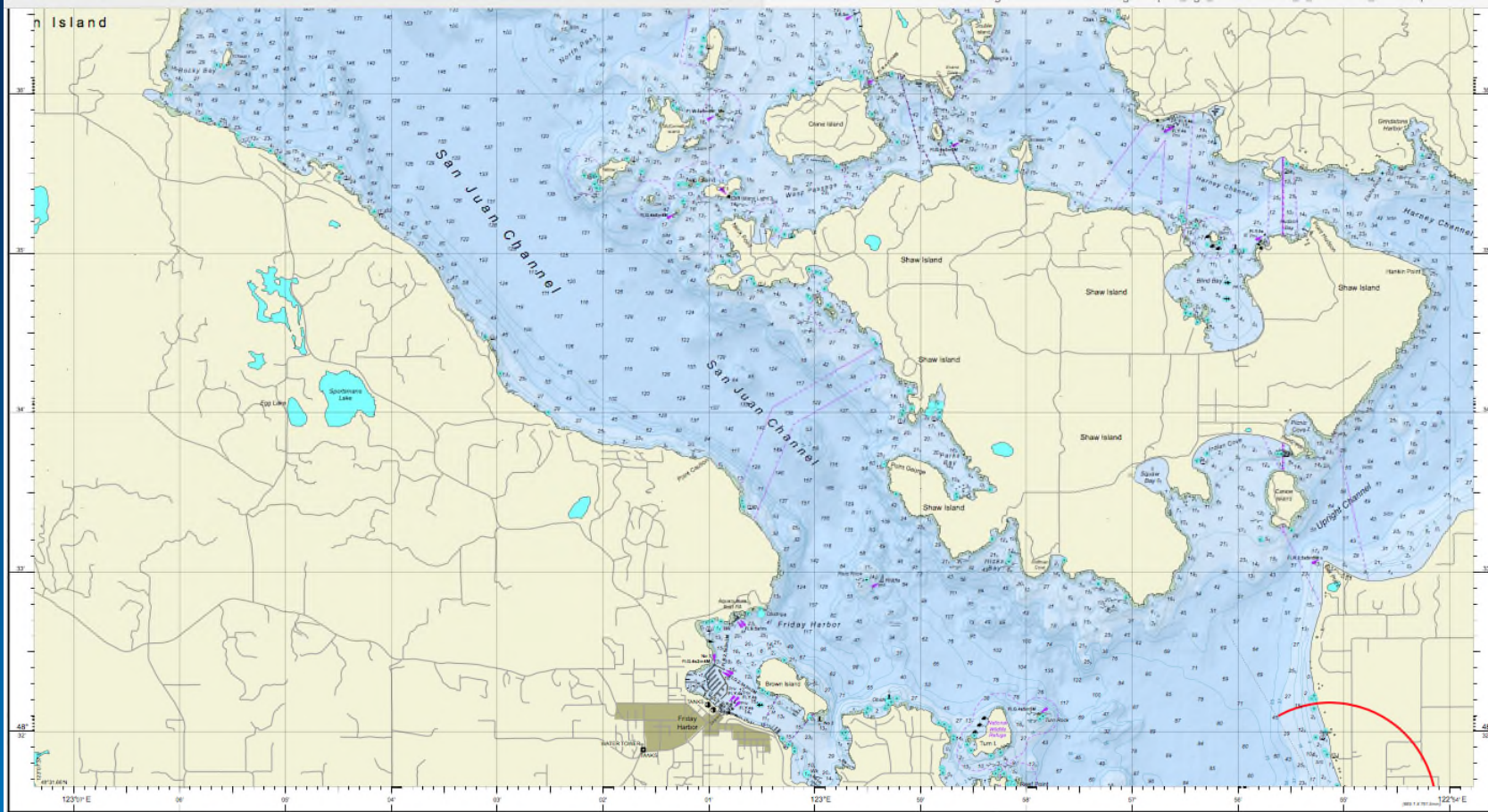
Fixed 25K



Click to select an extent



48°38'56"N 126°07'57"W



UNITS IN METERS

SAMPLE CHART : NOT FOR NAVIGATION

WGS 84

CUSTOM

Chart Legend

- |  |  |
|--|--|
|  |  |
|  |  |
|  |  |
|  |  |
|  |  |
|  |  |
|  |  |
|  |  |
|  |  |
|  |  |
|  |  |
|  |  |
|  |  |
|  |  |
|  |  |
|  |  |
|  |  |
|  |  |
|  |  |
|  |  |
|  |  |

Projection Information  
World\_Mercator (Calculated)  
SCALE 1:25,000 at Lat. 48.6176429696  
GCS\_WGS\_1984



1:25,000 Series

For Symbols and Abbreviations see INT1



Zones of Confidence Diagram

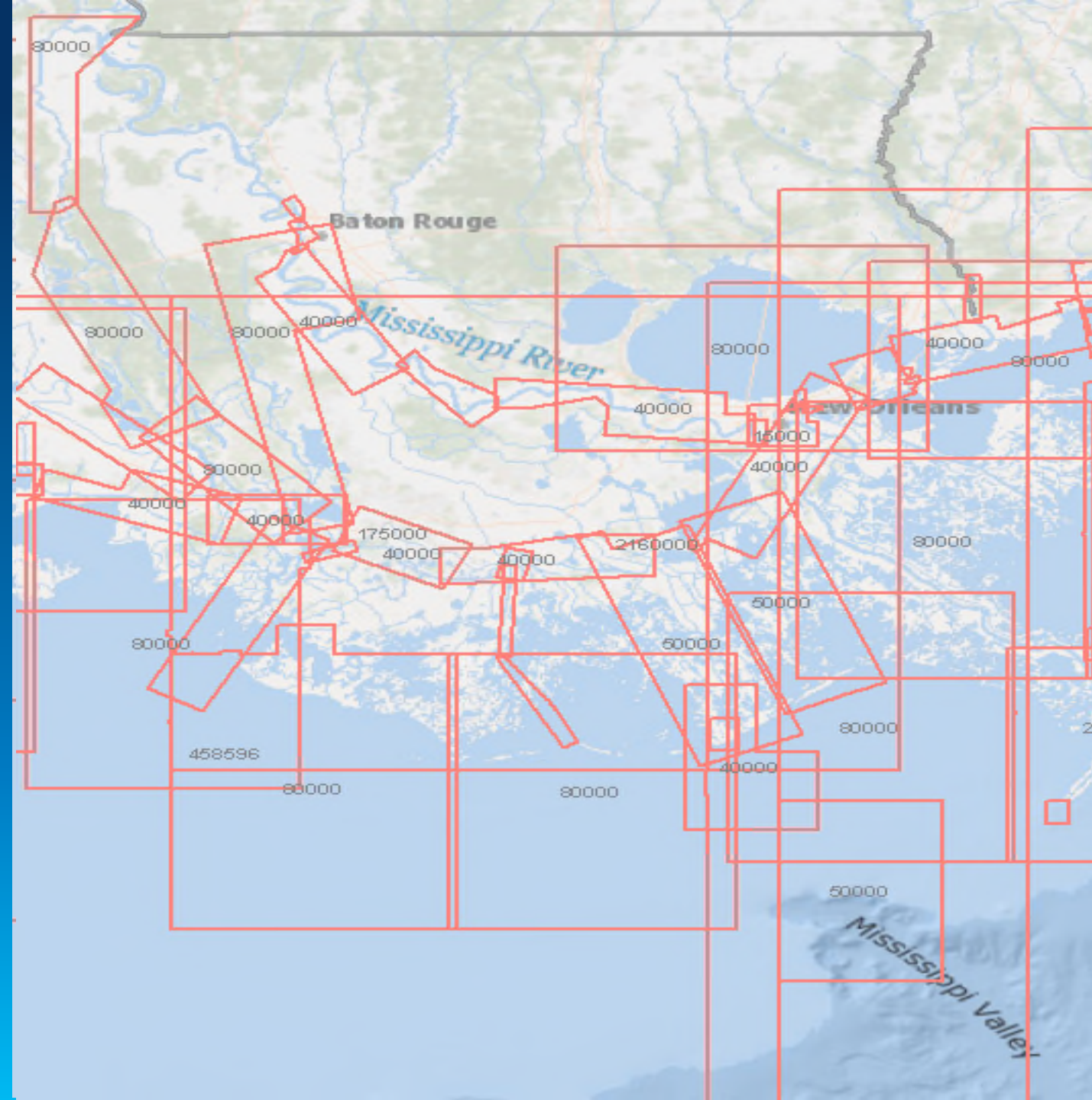


1:25,000 Series  
1:25,000 Series  
DECLINATION AT CENTER OF SHEET  
090° Annual Change

# Product on Demand (PoD)

## Deployment considerations

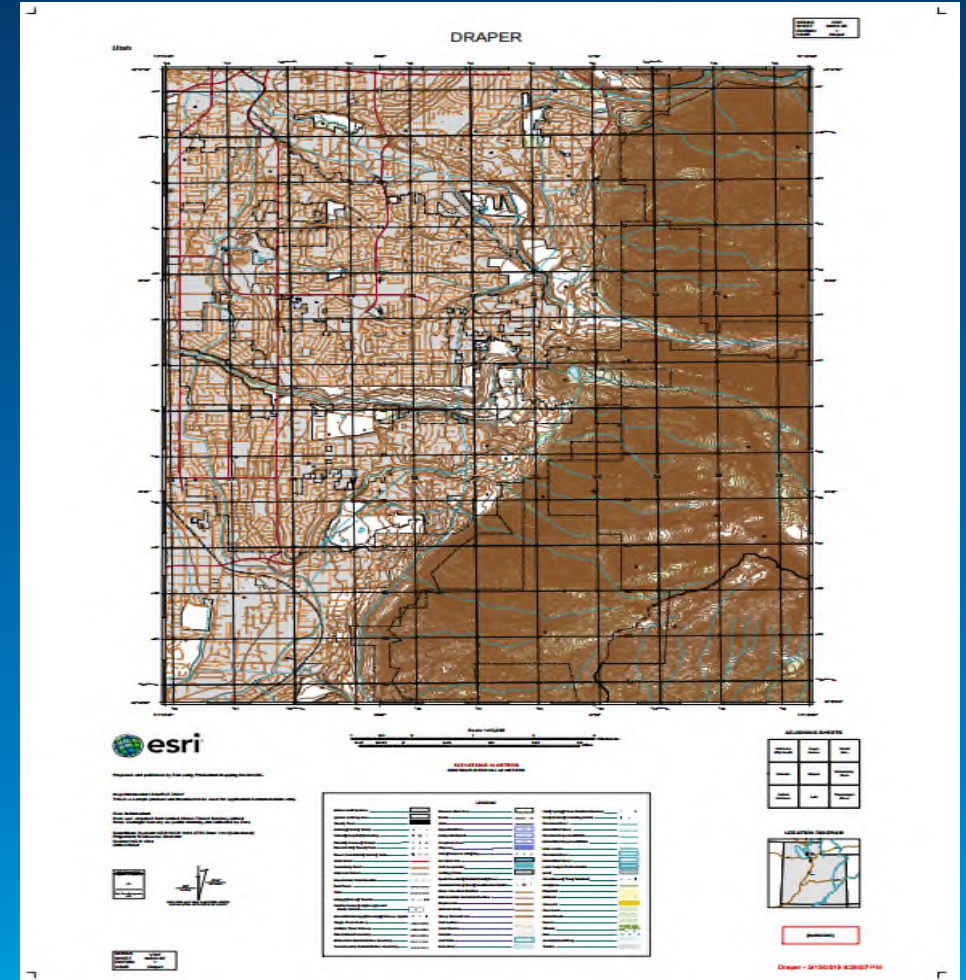
- **Layouts**
  - Complex portfolio
  - Marginalia
- **Scales**
- **History and tradition**



# Product on Demand (PoD)

## Examples

- **NGA Enterprise Product on Demand Service**
- **USDA Forest Service topographic maps**
  - Manages 17,000 maps
  - Produce 750 maps per month
- **Government of Hong Kong lands department**
  - 500 users
  - Variety of map content



# Product on Demand (PoD)

## Benefits

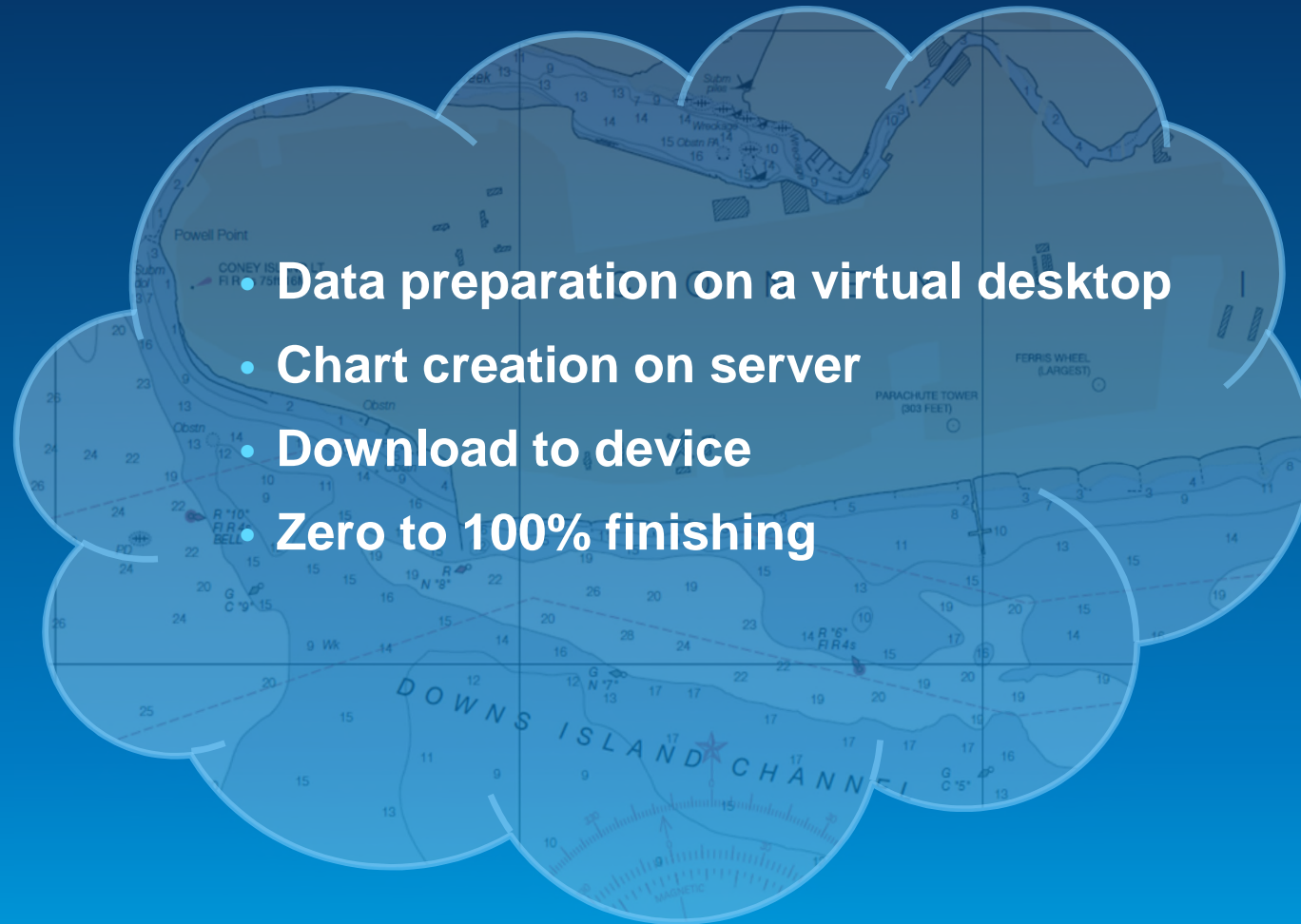
- Notices/Patches/Updates
- Added value
- Complete automation
- Accelerate map creation
- Variety of deployment options





# Product on Demand (PoD)

Entire Chart Production System hosted in the Cloud



- Data preparation on a virtual desktop
- Chart creation on server
- Download to device
- Zero to 100% finishing

# Thank you!



Understanding our world.

Please sign in for our seminar on Thursday at 13:30 hrs. room WS-3

*The Use of the ArcGIS Platform in Hydrographic Surveys (an entire workflow performed in Mexico)*

[rponce@esri.com](mailto:rponce@esri.com)